

# Proven value for off-grid, backup power and self-consumption

## Conext™ SW inverter/charger

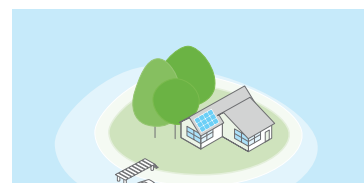
The Conext SW is a pure sine wave inverter that provides reliable power after a simple installation. The unique features of the Conext SW adds value for both installers and system owners globally.



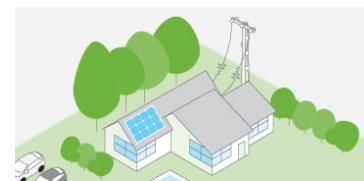
### Solution at a glance

Delivering proven value at a competitive price, the Conext SW inverter/charger provides the best value for off-grid solar, self-consumption and long-term backup for homes, small business and small remote communities.

- **High reliability** design proven through extreme testing under the harshest conditions.
- Leading performance in **surge capability** and charging efficiency.
- Most advanced **energy optimization** configurable features with the ability to cover a wide variety of applications.
- Complete balance of system and comprehensive commissioning tools for **easy-installation**.
- **Plug and play** monitoring and control based on Xanbus network.
- **Simple** to install, maintain and operate.



Off-grid solar



Backup power



Self-consumption

# Conext SW Inverter/charger

## Technical Specifications - North America

Device short name	SW 2524 120/240	SW 4024 120/240	SW 4048 120/240
<b>Electrical specifications - inverter</b>			
Output power (continuous) at 25°C	3000 W	3400 W	3800 W
Output power (30 min) at 25°C	3300 W	4000 W	4400 W
Output power (5 sec) at 25°C	5000 W	7000 W	7000 W
Peak current	24.3 A	41 A	41 A
Output frequency	50 / 60 Hz selectable	50 / 60 Hz selectable	50 / 60 Hz selectable
Output voltage	120 / 240 Vac	120 / 240 Vac	120 / 240 Vac
Output wave form	True sine wave	True sine wave	True sine wave
Optimal efficiency	91.5%	92%	94%
Idle consumption search mode	<11 W	<11 W	<11 W
Input DC voltage range	20 - 34 Vdc	20 - 34 Vdc	40 - 68 Vdc
AC connections	Single / Split phase	Single / Split phase	Single / Split phase
<b>Electrical specifications - charger</b>			
Output current	65 A	90 A	45 A
Nominal output voltage	24 Vdc	24 Vdc	48 Vdc
Output voltage range	12 - 32 Vdc	12 - 32 Vdc	24 - 64 Vdc
Charge control	2 or 3 stage	2 or 3 stage	2 or 3 stage
Charge temperature compensation	Yes - BTS included	Yes - BTS included	Yes - BTS included
Optimal efficiency	90%	90%	92%
AC input power factor	> 0.98	> 0.98	> 0.98
Input current	9 A	13 A	12 A
Input AC voltage	120 / 240 Vac split phase	120 / 240 Vac split phase	120 / 240 Vac split phase
Input AC voltage range line to neutral	95 - 135 Vac single phase 170 - 270 Vac	95 - 135 Vac single phase 170 - 270 Vac	95 - 135 Vac single phase 170 - 270 Vac
Dead battery charge	Yes	Yes	Yes
<b>General specifications</b>			
Tare loss	<b>24 W</b>	<b>29 W</b>	<b>27 W</b>
Compatible battery types	FLA, Gel, AGM, Custom	FLA, Gel, AGM, Custom	FLA, Gel, AGM, Custom
Transfer relay rating	30 A	30 A	30 A
Transfer time (AC to inverter and inverter to AC)	<1 cycle (16.7 ms)	<1 cycle (16.7ms)	<1 cycle (16.7 ms)
Optimal operating temperature range	-20°C to 60°C (-4°F to 140°F)	-20°C to 60°C (-4°F to 140°F)	-20°C to 60°C (-4°F to 140°F)
Storage ambient temperature range	-40°C to 85°C (-40°F to 185°F)	-40°C to 85°C (-40°F to 185°F)	-40°C to 85°C (-40°F to 185°F)
Humidity Operation / storage	≤ 95% RH, non condensing	≤ 95% RH, non condensing	≤ 95% RH, non condensing
Ingress protection rating	Indoor only, IP20	Indoor only, IP20	Indoor only, IP20
Altitude (operating)	2000 m (6562 ft)	2000 m (6562 ft)	2000 m (6562 ft)
Product weight	22.3 kg (49.0 lb)	28.1 kg (62.0 lb)	28.1 kg (62.0 lb)
Shipping weight	27.2 kg (60.0 lb)	35.0 kg (77.1 lb)	35.0 kg (77.1 lb)
Product dimensions (H x W x D)	41.8 x 34.1 x 19.7 cm (16.5 x 13.4 x 7.6 in)	41.8 x 34.1 x 19.7 cm (16.5 x 13.4 x 7.6 in)	41.8 x 34.1 x 19.7 cm (16.5 x 13.4 x 7.6 in)
Shipping dimensions (H x W x D)	56.0 x 44.0 x 32.0 cm (22.0 x 17.3 x 12.6 in)	56.0 x 44.0 x 32.0 cm (22.0 x 17.3 x 12.6 in)	56.0 x 44.0 x 32.0 cm (22.0 x 17.3 x 12.6 in)
System network and remote monitoring	Available	Available	Available
Warranty (Depending on the country of installation)	2 years	2 years	2 years
Part number	865-2524	865-4024	865-4048
<b>Regulatory approvals</b>			
Safety	c(CSA) us mark CSA C22.2, No. 107.1-01 UL1741 Ed.2		
EMC	FCC Part 15 Class B		
<b>Compatible products part numbers</b>			
Universal DC distribution panel	865-1016		
AC distribution panel (120/240 V)	865-1017		
Conext MPPT 80 600 or 60 150	865-1032 or 865-1030-1		
Conext Gateway	865-0329		
Conext ComBox	865-1058		
Conext System Control Panel	865-1050-01		
Conext Automatic Generator Start	865-1060-01		
Conext Battery Monitor	865-1080-01		
Conext Configuration Tool	865-1155-01		
Conext Quick Fit	SW 4048: 865-4048LPS or SW 4024: 865-4024LPS		

Specifications are subject to change without notice.